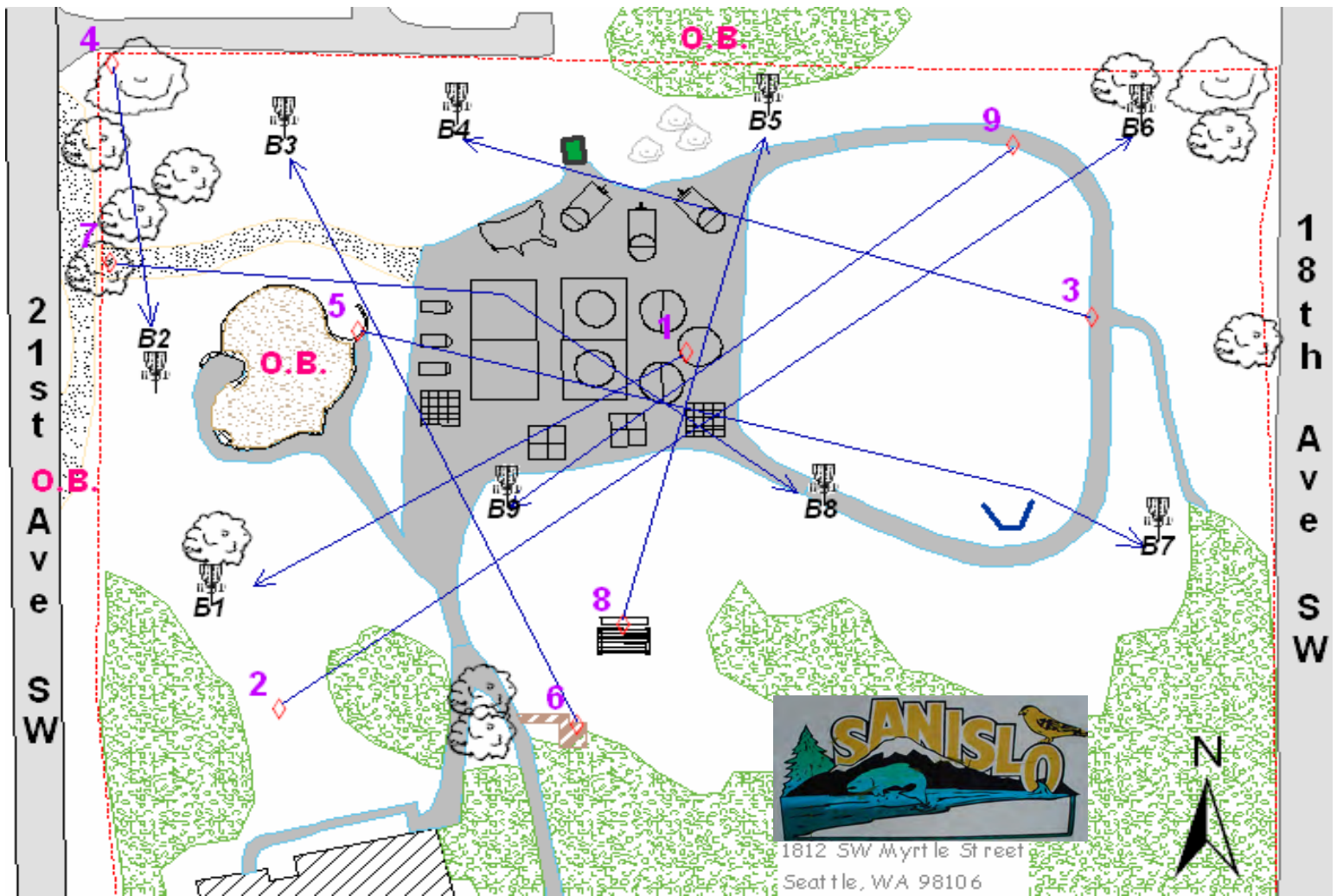


# Sanislo Safari Course- Front 9



Hole	1	2	3	4	5	6	7	8	9	Subtotal
Player	261 (3)	494 (3)	302 (3)	133 (3)	391 (3)	324 (3)	355 (3)	257 (3)	292 (3)	2809 (27)

Hole	Tee	Description	Basket	Distance	Par
1	CLOCK	Clock face at east end of play surface	B1	261	3
2	HILLTOP	Hill top (knoll) behind B1	B6	494	3
3	PATH-X	Path intersect between B 6 & 7	B4	302	3
4	NWCORNER	Tee from NW fence corner area	B2	133	3
5	GRSSARC	Grassy 'arc' by Big Toy	B7	391	3
6	DECK	Wetland Observation Deck (by Pergola)	B3	324	3
7	GRAVEL	Gravel Path by entrance (by B 2)	B8	355	3
8	PERGOLA	Pergola by B 8 & 9	B5	257	3
9	PATHGREEN	Northernmost green box adj to B6	B9	292	3
				<b>2809</b>	<b>27</b>

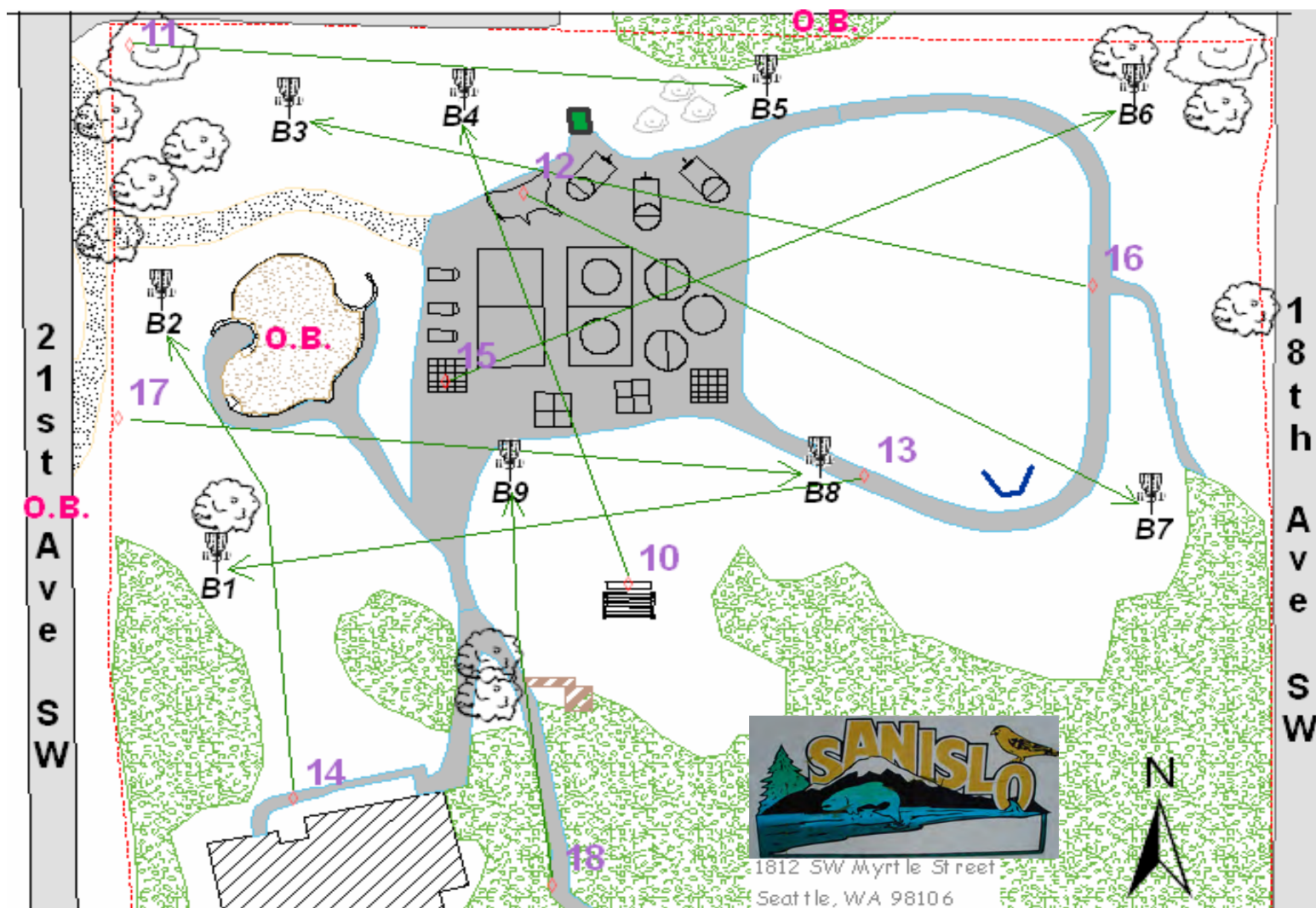
Current O.B. areas are outside the fenceline and discs that drop into the playground area (Big Toy).

It is a mando to play around and not over the Big Toy.

If a disc drops through the bottom of a basket (B4 has that tendency), it still completes the hole.

Area is open to the public, but use common sense, e.g. don't play during school hours, be aware of other park users, etc.

# Sanislo Safari Course- Back 9



	Hole	10	11	12	13	14	15	16	17	18	Subtotal	Total
Player	Feet (Par)->	258 (3)	297 (3)	337 (3)	306 (3)	264 (3)	353 (3)	377 (3)	329 (3)	229 (3)	2750 (27)	5559 (54)

Hole	Tee	Description	Basket	Distance	Par
10	PERGOLA	Pergola by B 8 & 9	B4	258	3
11	NWCORNER	Tee from NW fence corner area	B5	297	3
12	INDIANA	Tee behind Indiana (on US Map by B4))	B7	337	3
13	WETGREEN	Tee between Wetland Bnd & Green Box (by B8)	B1	306	3
14	SIDEWALK	Tee on sidewalk in front of window (S of B1)	B2	264	3
15	CHECKER	Checkboard (use S side) by B9	B6	353	3
16	PATH-X	Path intersect between B 6 & 7	B3	377	3
17	FENCEBAR	Tee in front of fence w/ bar (near B 1, [8 & 9 will line up])	B8	329	3
18	PATHXCEDAR	Tee at intersect on path (leading south from B9) & behind cedar	B9	229	3
				2750	27

Current O.B. areas are outside the fenceline and discs that drop into the playground area (Big Toy).

It is a mando to play around and not over the Big Toy.

If a disc drops through the bottom of a basket (B4 has that tendency), it still completes the hole.

Area is open to the public, but use common sense, e.g. don't play during school hours, be aware of other park uses, etc.