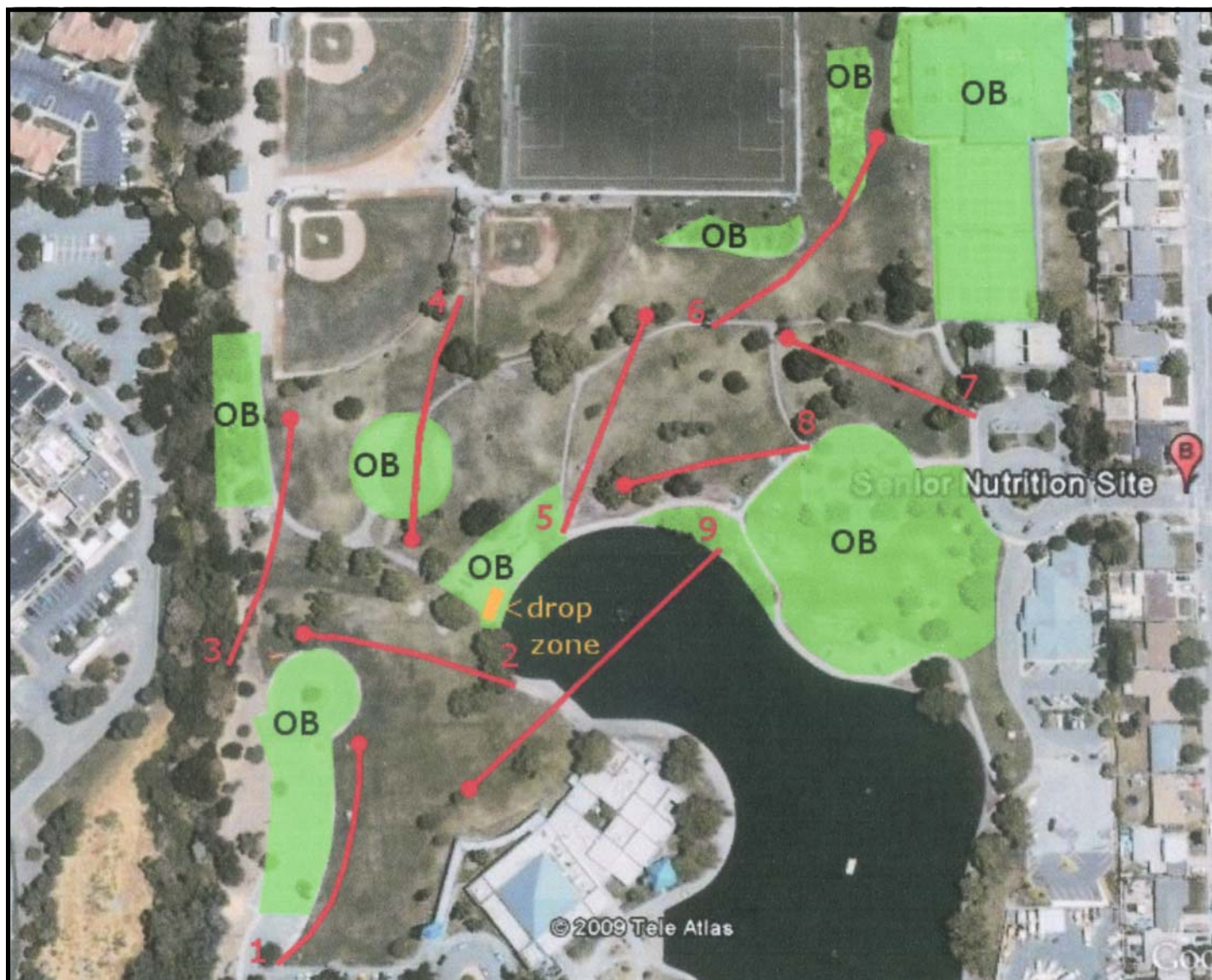




LUCCHESI PARK DISC GOLF COURSE



HELPFUL HINTS

- Hole 1 is a mandatory right route around the first light post.
- Hole 3 left of the walkway and past the gazebo is OB.
- Hole 4 plays as an island.
- All concrete areas play as out of bounds.
- Hole 9, if you are not confident in getting over the water you can choose to go to the drop zone (marked in orange) and you will be shooting your second stroke from there.

DISC GOLF RULES FOR RECREATIONAL PLAY

GENERAL DISC GOLF PLAY

Disc golf is played like ball golf using a flying disc. One point is counted each time the disc is thrown and when a penalty is incurred. The object is to acquire the lowest score.

TEE THROWS

Tee throws must be completed within or behind the designated tee area. Do not throw until the players on front of you are out of range.

LIE

The spot where the previous throw has landed, mark with a mini disc or turn over the thrown disc directly towards the hole or dog leg.

THROWING ORDER

After teeing off, the player whose disc is farthest from the hole always throws first. The player with the least amount of throws on the previous hole is to tee off on next hole.

FAIRWAY THROWS

Fairway throws must be made with the foot closest to the hole on the lie. The other foot may be no closer to the hole than the lie. A run-up and normal follow-through, after release, is allowed.

DOG LEG

A dog leg is one or more designated trees or poled in the fairway that must be passed as indicated by arrows. Until the dog leg is passed the closest foot to the dog leg must be on the lie when the disc is released.

COMPLETION OF HOLE

A disc that comes to rest in the basket or chains constitutes successful completion of that hole.

UN-PLAYABLE LIE

Any disc that comes to rest above the ground is considered an un-playable lie. The disc must be thrown from the lie on the ground, directly beneath the un-playable lie. Relocated to avoid damage to the vegetation.

OUT OF BOUNDS

A throw that lands out of bounds (OB), must be played from a point 3 feet in bounds from where the disc went out of bounds, permanent water hazards and public roads are always out of bounds.

PENALTIES

Recreational players will not be penalized for rule infractions. Other players will keep you honest.

COURSE COURTESY

Please pick up your trash and help new players play by the rules. You are the one that makes it work! Remember the most important rule: the one who had the most fun wins! Tee off and fly freely.