



SCORE CARD

Sauk River Disc Golf -Melrose, MN

Disc Golf Rules of Play

1. Players must tee off from the designated tee area. Be sure that players in front of you and other park users are out of range.

2. When playing a hole, the player farthest away from the basket throws first.

3. The hole is complete when a player's disc lands in the basket or chains.

4. The player with the least number of throws on the last hole tees off first on the next hole.

5. The spot where your previous throw has landed is called the "lie". To begin your next throw, your lead foot must be on or within 11 inches directly behind the lie. The other foot may be no closer to the hole than the lie. A run up and natural follow through after release is allowed.

6. Any disc that comes to rest above the ground (in a tree or bush) is considered an unplayable lie. The disc must be thrown from the lie on the ground directly beneath the unplayable lie. (1 stroke penalty)

DATE:	HOLE	1	2	3	4	5	6	7	8	9	TOTAL	+/-
	LENGTH	205	237	306	210	351	284	214	293	221		
PLAYERS	PAR	4	4	4	3	5	4	3	5	3		+/-
1												
2												
3												
4												
5												
6												

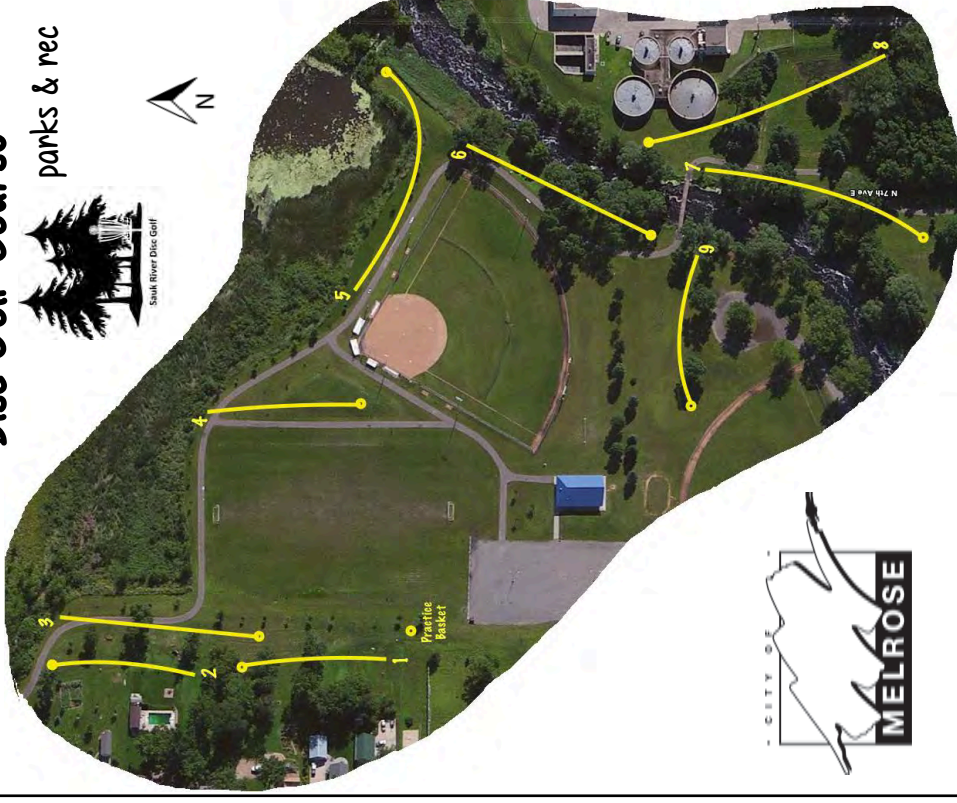
www.cityofmelrose.com

320.256.4278

Disc Golf Course



parks & rec



- ☐ Hole 1 Par 4 250 Ft ☐ Hole 5 Par 5 351 Ft
- ☐ Hole 2 Par 4 237 Ft ☐ Hole 6 Par 4 284 Ft
- ☐ Hole 3 Par 4 306 Ft ☐ Hole 7 Par 3 214 Ft
- ☐ Hole 4 Par 3 210 Ft ☐ Hole 8 Par 5 293 Ft
- ☐ Hole 9 Par 3 221 Ft

Funded by City of Melrose Parks & Rec