

Golden Hills Disc Golf



| Hole | 1 | 2 | 3 | 4 | 5 | 6 | 7 | 8 | 9 | Front | 10 | 11 | 12 | 13 | 14 | 15 | 16 | 17 | 18 | Back | Total |
|-------------------|-----|-----|-----|-----|-----|-----|-----|-----|-----|-------|-----|-----|-----|-----|-----|-----|-----|-----|-----|------|-------|
| Blue Tee (ft) | 330 | 280 | 180 | 182 | 175 | 200 | 300 | 230 | 195 | 2172 | 200 | 200 | 210 | 215 | 230 | 257 | 241 | 154 | 380 | 2087 | 4259 |
| Red Tee (ft) | 170 | 170 | 100 | 120 | 85 | 110 | 160 | 110 | 120 | 1145 | 150 | 100 | 155 | 130 | 180 | 180 | 170 | 110 | 170 | 1345 | 2490 |
| White Tee (ft) | 258 | 250 | 180 | 172 | 129 | 177 | 174 | 195 | 174 | 1709 | 195 | 165 | 192 | 192 | 192 | 242 | 241 | 154 | 360 | 1933 | 3642 |
| Elevation (White) | 25 | -20 | -63 | 27 | -4 | -34 | 12 | -2 | 12 | | -2 | 6 | -21 | -4 | 3 | 17 | 37 | 11 | | | |
| | | | | | | | | | | | | | | | | | | | | | |
| | | | | | | | | | | | | | | | | | | | | | |
| | | | | | | | | | | | | | | | | | | | | | |
| | | | | | | | | | | | | | | | | | | | | | |
| | | | | | | | | | | | | | | | | | | | | | |



Object of Disc Golf:

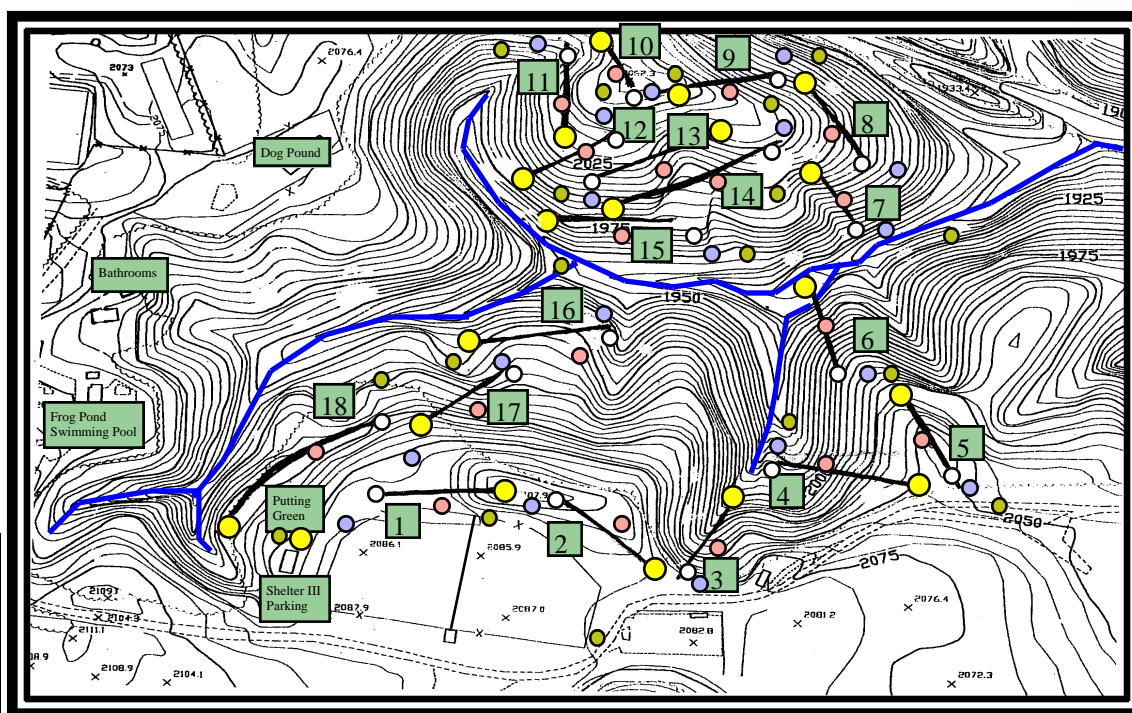
Throw a disc from tee to target over each hole of course in fewest throws.

Each throw after tee shot is addressed as a stroke from the lie of previous throw.

Discs thrown over fencing or stuck in a tree at least six feet high are considered a penalty stroke.

Par for this course is 54. Have A Great Time and Good Luck!

www.montva.com/parks



| Map Key | |
|-----------|--|
| Stream | |
| Blue Tee | |
| Red Tee | |
| White Tee | |
| Basket | |
| Gold Tee | |

Montgomery County Parks and Recreation Golden Hills Disc Golf Course Rules and Regulations

- Alcohol is not permitted on park property.
- Keep your dog on a leash or under control at all times. Please be considerate of other trail users by being responsible for your dog and disposing of pet waste properly.
- Cutting of timber is prohibited except by permission of the Montgomery County Parks and Recreation Department.
- Do not cut across switchbacks on trail, especially in the downhill direction. In addition to erosion damage brought on by cross-cutting, there is a definite possibility of being injured.
- Littering or defacing of any public property is not allowed. Creating graffiti on rocks, trees, baskets or other natural or manmade objects is not allowed.
- Protect the trail environment - do not remove things that belong on trails or blaze new trails.
- Course and trails are open from dawn to dusk.
- Contact Montgomery County Parks and Recreation to inquire about work groups or donations.
- Visitors are responsible for knowing and following park rules and regulations.
- Comments or Concerns: buchananbt@montgomerycountymd.gov (540) 382 6975 Please Don't Litter!

Pack it in...
Pack it out!

