

Brent Baca Memorial DGC **Albuquerque City Championships** **Course Rules and Notes**

General Rules:

- Do not damage the local plants. If your disc comes to rest inside a bush, and you can't take a legal stance without damaging the plant, take the first available lie on the line of play behind your disc.
- 2-meter rule is in effect.
- You may take 2-meter relief from barbwire fences.
- You must have a legal throw from ON the tee pad. No "on or behind" especially from the short tees.
- All pros and advanced men (Ma 1) will play long tees, all other divisions (advanced women, advanced masters/grandmasters, all intermediate, rec and juniors) play short tees.

Hole Notes (Hole/Par/Pro distance/Am distance)

#1/par3/338ft/243ft: Fence line on left OB, inside hole 6's island where marked by pink rope is OB.

#2/par3/390ft/280ft: Fence line on left OB.

#3/par3/444ft/288ft: Fence line on left OB, fence line long OB, Arroyo right OB, ditch crossing fairway OB.

#4/par3/283ft/219ft: Arroyo left OB where marked by either painted line or rope. If your drive goes OB, proceed to the marked drop zone with a 1 throw penalty. Any subsequent throw that goes OB, play where it went OB with 1 throw penalty.

#5/par3/297ft/223ft: Arroyo left OB, fence line right is OB. If your drive (from long tee) never crosses in bounds, you must re-tee.

#6/par3/280ft/222ft: Island hole. Your disc must come to rest inside marked island or you proceed to marked drop zone between the fence posts at bottom of hill. Once at the drop zone, you must keep throwing until you come to rest in bounds.

#7/par3/263ft/230ft: OB in Arroyo long of basket. If your drive goes OB, proceed to marked drop zone with a 1 throw penalty. Any subsequent throw that goes OB, take it at the last point where it was in bounds.

#8/par3/472ft/331ft: OB in marked areas on both sides of the fairway.

#9/par4/749ft/417ft: Arroyo left OB, Arroyo long of basket OB, OB beyond marked line on right side of fairway.

#10/par4/S74ft/409ft: Fence line left OB, OB right beyond black cable running from tee box to around the green and beyond green.

#11/par3/368ft/233ft: OB beyond black cable right (10's fairway)

#12/par3/253ft/190ft: NO OB!!!

#13/par3/498ft/355ft: NO OB!

#14/par4/688ft/418ft: OB right of posts from tee box until the 450' mark. From there the fairway makes a 90* turn towards the basket where the posts on the right are OB with a line that continues on the south side of the Arroyo. The Arroyo is OB. Any throw made from the north side of the Arroyo that goes OB inside the Arroyo, proceed to the marked drop zone with a 1 throw penalty. Any throw from the south side of the Arroyo that goes OB in the Arroyo, play at last point where it was in bounds with a 1 throw penalty.

#15/par3/421ft/263ft: OB left side of fairway beyond marked line. Beyond the fence that runs short of the basket is OB except inside the marked green where the basket is located marked by a rock circle.

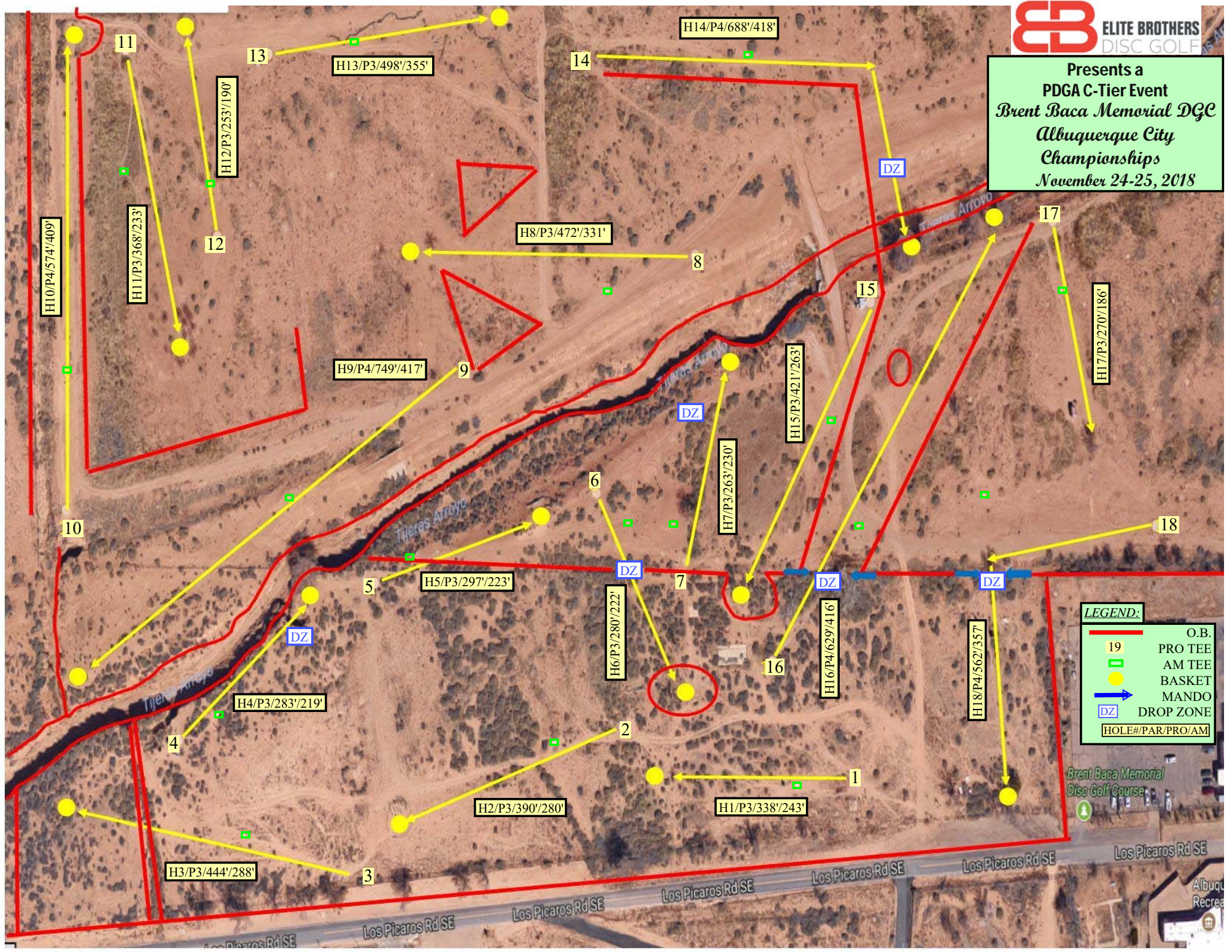
#16/par4/629ft/416ft: Double mando from the long tee between the marked trees. If you miss the mando proceed to the marked drop zone. OB left side of fairway beyond marked line. OB right side of fairway beyond marked line. OB inside of marked "pond" in center of fairway. OB long of basket in the Arroyo.

#17/par3/270ft/186ft: NO OB (unless you go into the mouth of the tank)

#18/par4/562ft/357ft: Rules for long tee: Fence left is OB. Triple mando through arch in tree. Your drive must land either right of the fence or no further through the mando than the marked rock circle. Then you can complete the mando on your second shot. If you miss the mando on your second shot, proceed to the drop zone under the mando. If your drive goes over the fence left without completing the mando, you must still complete the mando before proceeding. After completing the mando, fence line left and fence line long of basket is OB.

Rules for short tee: Triple mando through arch in tree. If you miss the mando, proceed to drop zone under mando with 1 throw penalty. Once completing the mando, fence line left and long of basket is OB.

Presents a
PDGA C-Tier Event
Brent Baca Memorial DGC
Albuquerque City
Championships
November 24-25, 2018



LEGEND:

- O.B.
- 19 PRO TEE
- AM TEE
- BASKET
- MANDO
- DZ DROP ZONE
- HOLE#/PAR/PRO/AM

Brent Baca Memorial
Disc Golf Course
Los Pícaros Rd SE
Albuquerque Recreation Center