

DISC GOLF

Boundary Waters Parks

Disc Golf (also known as “Frisbee Golf” and “Folf” or “Frolf” and even “Disc Golf”) is played much like traditional golf.

Players use flying discs (golf disc or Frisbees®) and play holes that start with a tee area and end with a Disc Golf Basket or Target.

The object: complete the hole by putting your golf disc in the basket in the fewest number of throws.

The sport was formalized in the 1970's and is governed by the Professional Disc Golf Association (PDGA). There are more than 1,750 disc golf courses worldwide, with over 1,400 in the USA.

**For more information please call
Boundary Waters
770-489-2175**



DOUGLAS COUNTY DISC GOLF CLUB

Douglas County Disc Golf Club was formed January 2015. We are an affiliate club of Atlanta Disc Golf. Our goal is to promote and help grow the sport of disc golf in Douglas County. At this time we have four disc golf courses in Douglas County. One at Hunter Memorial Park, another at Deer Lick Park, the new course at Boundary Waters Park and the forth is at Louise Suggs Park in Austell (but it's technically Douglas County land). Each of these courses has different challenges for a disc golfer as far as distances and technical shots.

Disc golf has seen an incredible amount of growth the past few years. Partly due to the fact that it's usually free to play and you can buy the basic 3 discs needed for \$20 - \$30. Another big advantage disc golf has is that a course can be built on park land that normally goes unused. And unlike ball golf, trees in the fairway make the course more challenging. Disc golf as the name suggests is similar to ball golf as far as the scoring. The goal is to throw a disc into a basket in as few throws as possible. There are 18 holes (we still call them holes) and they are par 3's 4's and 5's.



**Boundary Waters Park
5000 HWY 92/166
Douglasville GA 30135**



**18 Hole
Disc Golf Course at
Boundary Waters Park
(770) 489-2175**

Hole 1: Par 3 422 Feet.



Hole 2: Par 3 - 226 Feet



Hole 3: Par 3 - 266 Feet



Hole 4: Par 4 - 570 Feet



Hole 5: Par 4 - 422 Feet



Hole 6: Par 3 - 251 Feet



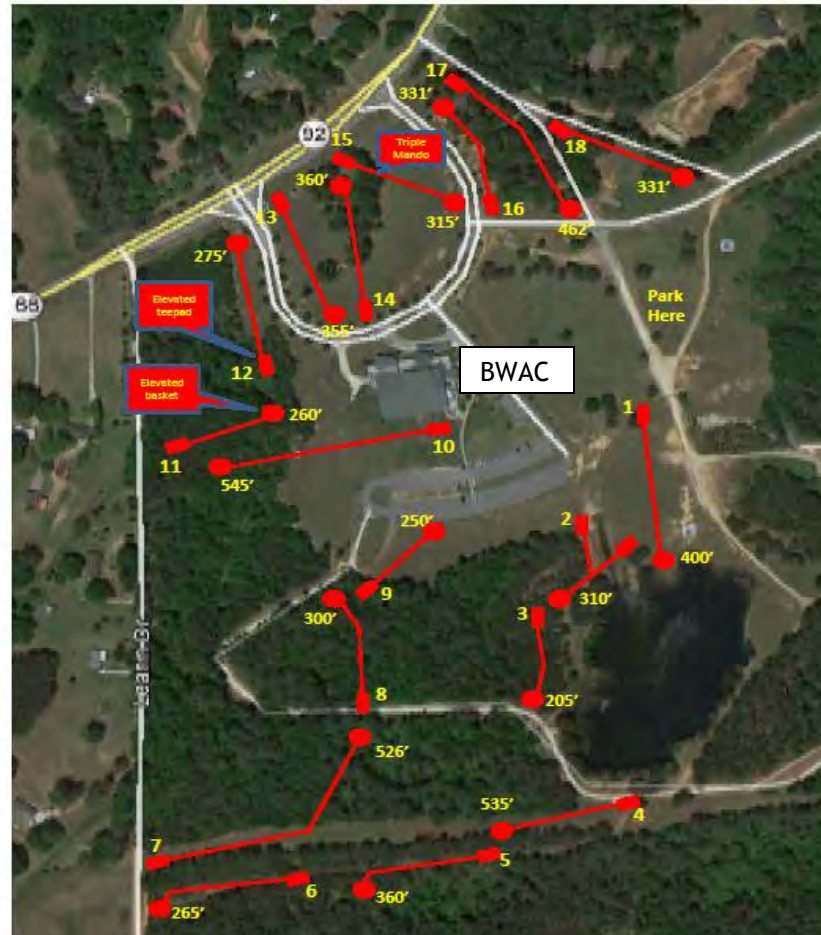
Hole 7: Par 5- 555 Feet



Hole 8: Par 3- 295 Feet



Hole 9: Par 3 233 Feet.



Hole 10: Par 4- 509 Feet



Hole 11: Par 4- 485 Feet (Elevated Basket)

Hole 12: Par 3- 303 Feet
(Elevated teepad)



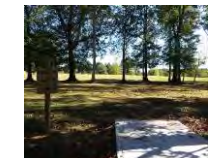
Hole 13: Par 3- 337 Feet



Hole 14: Par 3- 360 Feet



Hole 15: Par 3- 345 Feet



(Triple Mando)

Hole 16: Par 3- 347 Feet



Hole 17: Par 3- 325 Feet



(Elevated Basket)

Hole 18: Par 3- 357 Feet

